

Artisan Vinyl Pergola



Assembly Manual

Beefy Vinyl Pergola Assembly Manual

Thank you for your purchase of this Pergola.

This manual is designed to simplify the assembly process, however we recommend having an experienced carpenter involved in the project. Please read through the entire manual before starting!

The Pergola put together for this manual was a 10'x14' Rectangle. This manual can also be used for other sizes. It took 2 men, approximately 4 hours using the tools shown. However, it may take you longer since it will be a new project for you.

Take a deep breath and get at it; the satisfaction and enjoyment of this Pergola is only a few hours away. Have fun!

You have purchased a product that consists of heavy, bulky pieces. With your purchase, you assume full responsibility to have the necessary manpower and/or equipment available to unload the items. You also agree that any damage that happens to the equipment, product, or individuals during the unloading process, or during the entire construction process, is your responsibility, and neither the seller, nor the manufacturer, will be held liable for any such damage.

Tools Required for Job



6' Step
Ladders



Cordless
Drill



25' Tape
Measure



Utility
Knife



Ratchet with
3/4" Socket



Hammer
Drill



1/2" Concrete
Drill Bit



(4) 2"x4"x8' Long
(2) 2x4 Approx 4' Long
for bracing header assemblies

Parts List



4.1/2" White Pan
Screws



2" Pan Screws



3.1/2" Brown
Screws



2.1/2" Brown
Screw



1" Pan Screw



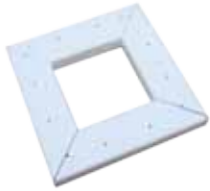
1.1/2" Screws



4" Concrete Lag



2" Square Drive
Screw Bit



Square Post Trim



Top Post Cap



Decorative Trim Cover



Inside Corner Trim



Corner Bracket



Joist Bracket



Decorative End Caps



PVC Cement



Mr. Clean Cleaning
Sponge



Country Lane Plaque
w/ Serial #



Main Double Header



2x8 Header



2x6 Rafter Joist



2x4 Stringer



Set your Vinyl Pergola Package as close to the building site as possible.

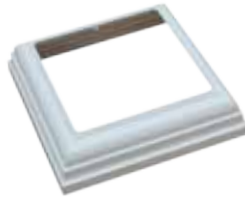


Remove protective shrink wrap. Do not unwrap until you are ready to build. Keep dry and protected until you are ready to assemble the Pergola.

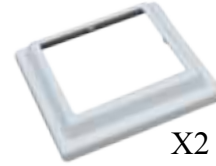
6x6 Post Assembly



Top Square Trim

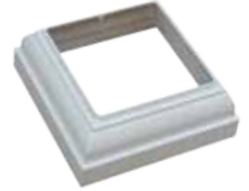


Top Large Trim



Top & Bottom Small Trim

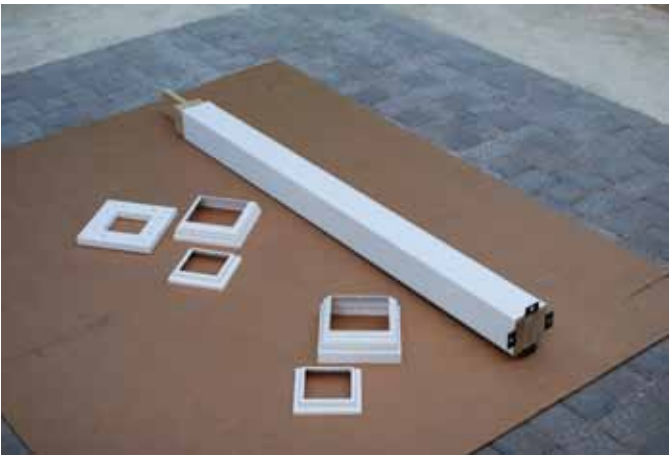
X2



Bottom Large Trim



6x6 Post



Layout Post and all Post Trim Pieces.



Insert all Trim Pieces onto post from the top of the post down.



Insert all Trim Pieces in the order shown above.

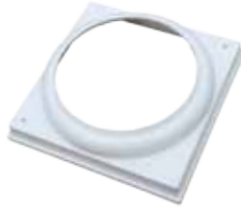
Note: Be sure the Pieces are installed correctly before you move onto to assembling the Pergola. Changing or adding pieces is impossible once you have started assembly.

Take note the direction the pieces are facing and that you install them properly.

Round Column Post Assembly



Top Square Trim



Top Trim



Decorative Ring



Bottom Trim



10" Column



Layout Post and all Post Trim Pieces.



Insert all Trim Pieces onto post from the top of the post down.



Insert all Trim Pieces in the order shown above.

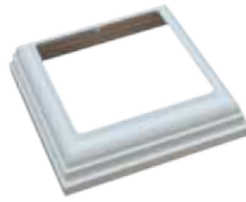
Note: Be sure the Pieces are installed correctly before you move onto to assembling the Pergola. Changing or adding pieces is impossible once you have started assembly.

Take note the direction the pieces are facing and that you install them properly.

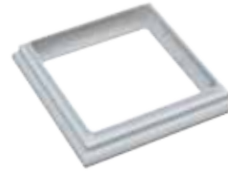
8x8 Post Assembly



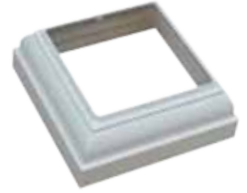
Top Square Trim



Top Large Trim



Top Small Trim



Bottom Large Trim



8x8 Post



Layout Post and all Post Trim Pieces.



Insert all Trim Pieces onto post from the top of the post down.

Top of Post

Bottom of Post



Insert all Trim Pieces in the order shown above.

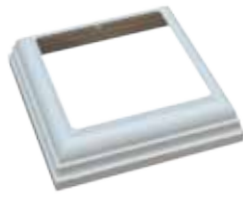
Note: Be sure the Pieces are installed correctly before you move onto to assembling the Pergola. Changing or adding pieces is impossible once you have started assembly.

Take note the direction the pieces are facing and that you install them properly.

Superior Post



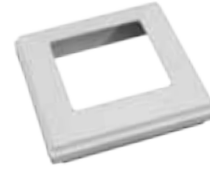
Top Square Trim



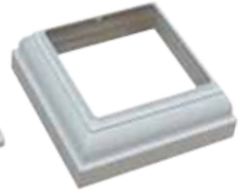
Top Large Trim



Top Small Trim



Top Superior Trim



Bottom Superior Trim



8x8 Superior Sleeve



6x6 Post



Layout Post and all Post Trim Pieces.



Insert all Trim Pieces onto post from the top of the post down.

Top of Post

Bottom of Post



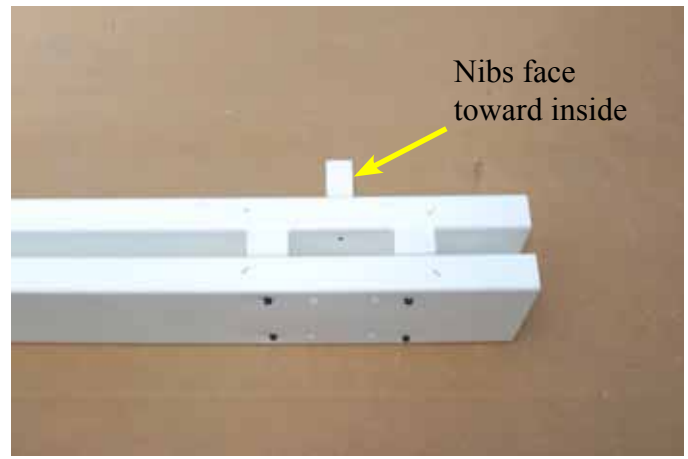
Insert all Trim Pieces in the order shown above.

Note: Be sure the Pieces are installed correctly before you move onto to assembling the Pergola. Changing or adding pieces is impossible once you have started assembly.

Take note the direction the pieces are facing and that you install them properly.



Place protective cardboard on ground or patio to protect vinyl pieces from damage. Layout Main Double Header.



Place Main Header on floor with Nibs facing toward inside of the pergola and bottom side up.



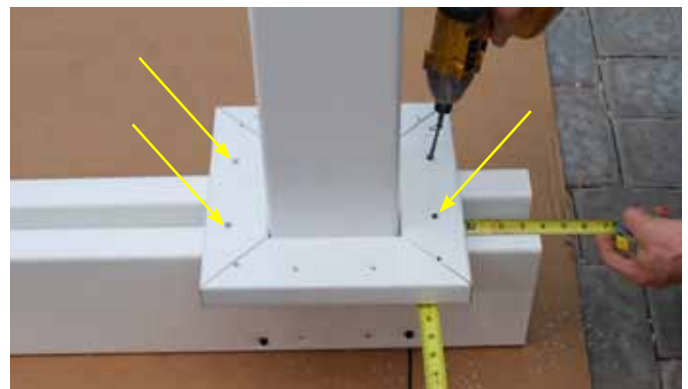
Install Post with trim pieces already in proper place.
Note: All Trim Pieces must be installed on the post before completing this step.



Turn Post upside down and insert into slot of main double header.



Slide post down against and hold in a level position.



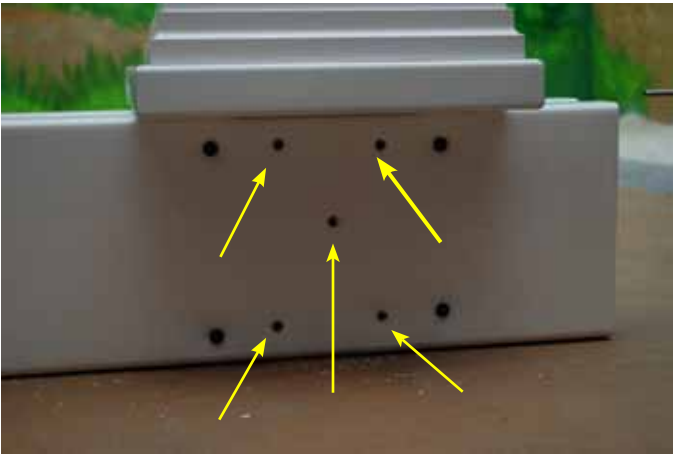
Slide Square Trim Piece down into position and fasten to Main Header, Measure 3.3/4" from end of 2x8's and 3.3/8" on both sides.
Drive (4) 2.1/2" Brown Screws into pre drilled holes as shown with the yellow arrows. Counter-sink screws slightly.



Set Post into a level position or align squarely with header.



Fasten Main Header to Post on outside using (5) 3.1/2" Brown Screws into pre-drilled holes.



Tighten screws so they sink slightly into vinyl.



Fasten Main Header to Post on inside using (4) 3.1/2" Brown Screws into pre-drilled holes.



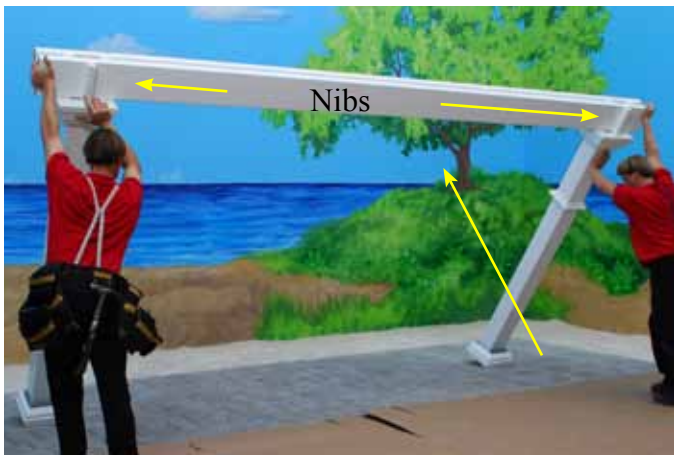
Install Second Post at the other end of the Main Header. Attach using previous steps.



Lower Posts of the header assembly.



Carefully set onto floor.



Lift Header side up and set into place with the Nibs on the Header Facing the inside of the Pergola.



To keep the Header Assembly upright build an A-frame brace using your own 8' long 2x4's and fasten with (2) 2.1/2" screws.



Assemble 2nd Header and Post Assembly in location as shown.



Carefully lay the post side down and lift the header side up into an upright position with the Nibs on the Main Header facing the inside of the pergola.



Measure 2x8 Header



Measure spacing distance between the two Header Assemblies.



Adjust Posts to appropriate distance apart.



Install 2x8 Header on inside.



Place into Position.



Attach 2x8 header to Nibs on Main Header using (3) 3.1/2" Brown Screws.



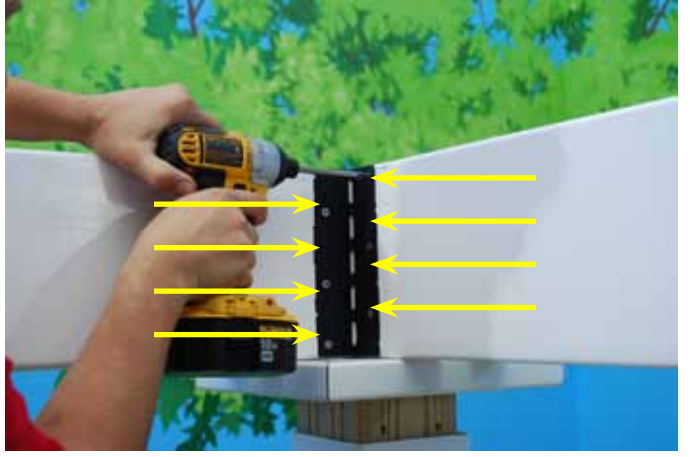
Install 2x8 Header on outside.



Fasten using (3) 3.1/2" Brown Screws.



Install Corner Brackets on the inside corner



Using (8) 1.1/2" Screws per bracket.



Install Corner bracket on outside corner



Install Decorative Trim Covers.



Place in center position of the Square Trim Piece below.



Fasten at both corners from the bottom up using (2) 2.1/2" Brown Screws.



Top side will get fastened later.



Install Inside Corner Trim.



Fasten Square Trim to Inside Corner Trim from the bottom up using (1) 2.1/2" Brown Screw. Top side will get fastened later.



Install Outside Corner Trim.



Fasten Square Trim to outside Corner Trim from the bottom up using (1) 2.1/2" Brown Screw.



Install Top Post Cap



Fasten to pieces below using (12) 1" Pan Screws. Adjust trim pieces to fit snug against header when fastening.



Fasten Square Trim to 2x8 Header Boards from bottom up using (2) 2.1/2" Brown Screws through pre-drilled holes.



Slide both Top Post Trim Pieces tight up against Square Trim Piece.



Fasten into post using 2" Pan Screws.



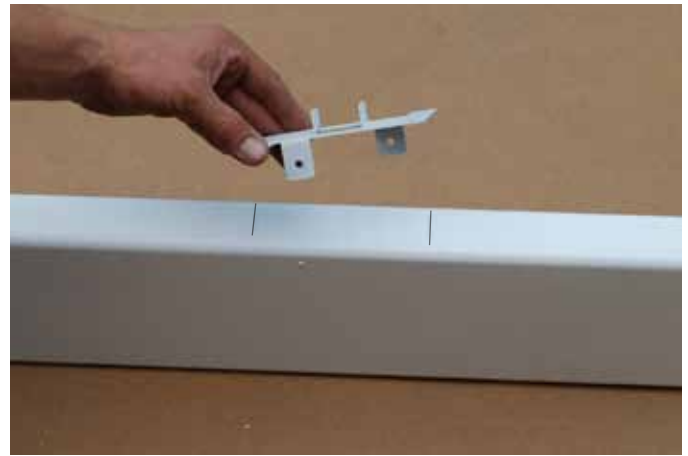
Fasten to post on 2 opposite sides with 1 screw per side.



You should now have completed all Posts and Headers.



Prepare 2x6 Rafter Joists. Keep clean by using protective cardboard on floor.



Install Joist Brackets onto 2x6 Joists (1) close to each end at between pre marked locations



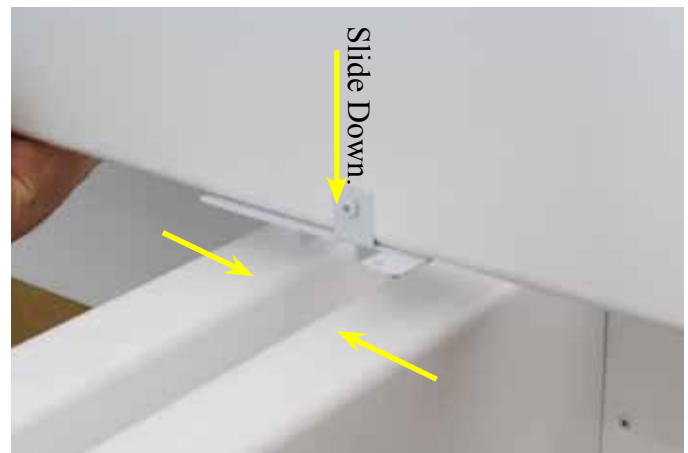
Fasten Bracket to Joist using (2) 2" Pan Screws. Two brackets per Joist.



Install 2x6 Rafter Joist with attached bracket face down.



Set into Place.



Slide attached Bracket into space between double 2x8 Headers below.



Set all 2x6 Rafter Joists into place.



Locate Rafter Spacing Board and use the side with 2x6 Rafter Spacer written on.



Use provided spacer board to place all 2x6 Rafter Joists into position.



Starting at one end, slide each Rafter into position at each notch in spacer.



Tap spacer firmly down into place.



Measure both ends to create equal spacing.



Fasten Rafter Joists to Header below using (2) 2" Pan Screws per 2x6 joist at each end.



Fasten Joist through attached brackets.



Slide spacer to opposite side of Pergola.
Re- Measure both sides to create equal spacing.



Attach each 2x6 Rafter to 2x8 Header below using (2) 2" Pan screws through attached bracket.



Install 2x4 Stringers



Using Rafter Spacing Board use the side with 2x4 Stringer Spacer written on.



Place Spacer into position starting at one side working across.



Space each 2x4 stringer into position fitting properly into notch of spacer board.



Measure both sides of stringers to outside end of 2x6 Rafters below and even out both sides.



Measure distance of 2x6 Rafter joint to outside end of 2x4 Stringer on both sides.



Space 2x4 Stringers equally on both sides.



Fasten 2x4 Stingers to 2x6 Rafters below using (1) 4.1/2" Pan Screw per intersection.



Tighten Screw until snug against vinyl. Do not counter sink screw into vinyl. Vinyl will break if over tightened.



Measure the distance of each of the 2x4 stringers protruding out past the 2x6 Joist below and adjust to match the 1st one.



Fasten 2x4 stringers to 2x6 Joists below using (1) 4.1/2" Pan Screw at every intersection.



Complete Rafter & Stringer Assembly.



Install 2x8 Decorative End Caps.
Apply PVC Cement on the inside edge of decorative end caps. Note: Opening the can is sometimes difficult, tap on edge of lid with a hammer to help break the seal.



Slide Decorative End Cap onto 2x8 ends.



Push onto End Cap and hold for a few seconds, make sure it is tightly in against 2x8.



Repeat previous three steps for 2x4 stingers. Use PVC Cement for all Decorative Ends.



Repeat previous steps for 2x6 Joist Ends again use PVC Cement on inside of all Decorative End Caps.



Anchor Post to Concrete Pier below. Pre-drill hole in concrete using a 1/2" cement drill bit.



Insert provided 4" Concrete Lag or purchase longer ones if your piers are below pavers. Be sure to have a bolt long enough so that at least 4" of the bolt is firmly into concrete footer.



Use (4) Concrete Lags per Post.



Slide both Trim Pieces down against ground. Push Small Bottom Trim down to pop onto lower Large Bottom Trim Piece. Attach to post using (2) 2" Pan Screws. One on both sides opposite each other.



Using the provided Mr. Clean Sponge, dampen with water and use on all vinyl areas to clean any scuffs or dirt that may have happened during installation.



Enjoy your new Artisan Pergola!